

ΑΡΙΘΜΟΣ ΤΕΧΝΙΚΩΝ 230
 ΕΜΒΛΩΝ ΤΕΧΝΙΚΩΝ =
 506.00ΤΗ
 Θ/ΕΚ 44 /15
 ΑΡ. ΕΓΓΡΑΦΗΣ 0/ 44219
 ΣΟΝΗ ΠΙ
 (Παραβρέθηκε) Καρακίλια
 15% ΣΔ ΚΑΙ ΕΚ

ΔΙΑΧΩΡΙΣΜΟΣ ΠΡΟ 1990

ΝΕΔΙ ΣΥΝΤΕΛΕΣΤΕΣ
 ΔΟΜΗΣΗ = 60% = 351.60τμ
 ΚΑΛΥΨΗ = 35% = 205.10τμ

Σ ΟΡΟΦΟΙ
 Η=0.30
 Ανευρέσεις 3μ

Unit Areas

Ground Floor = 76.60sqm
 1st Floor = 78.60sqm
 Total Built Areas 155.20sqm

Total Covered Areas (bird's eye) = 88.00sqm

Covered Verandas (ground floor) = 3sqm
 Covered Verandas (1st floor) = 10.00sqm

Uncovered Verandas (ground floor) = 43.50sqm
 Uncovered Verandas (1st floor) = 0 sqm
 Total 43.50 sqm

storage = 0 sqm
 parking space = 27.30sqm
 swimmingpool = 24.50 sqm

Total Areas for both residences

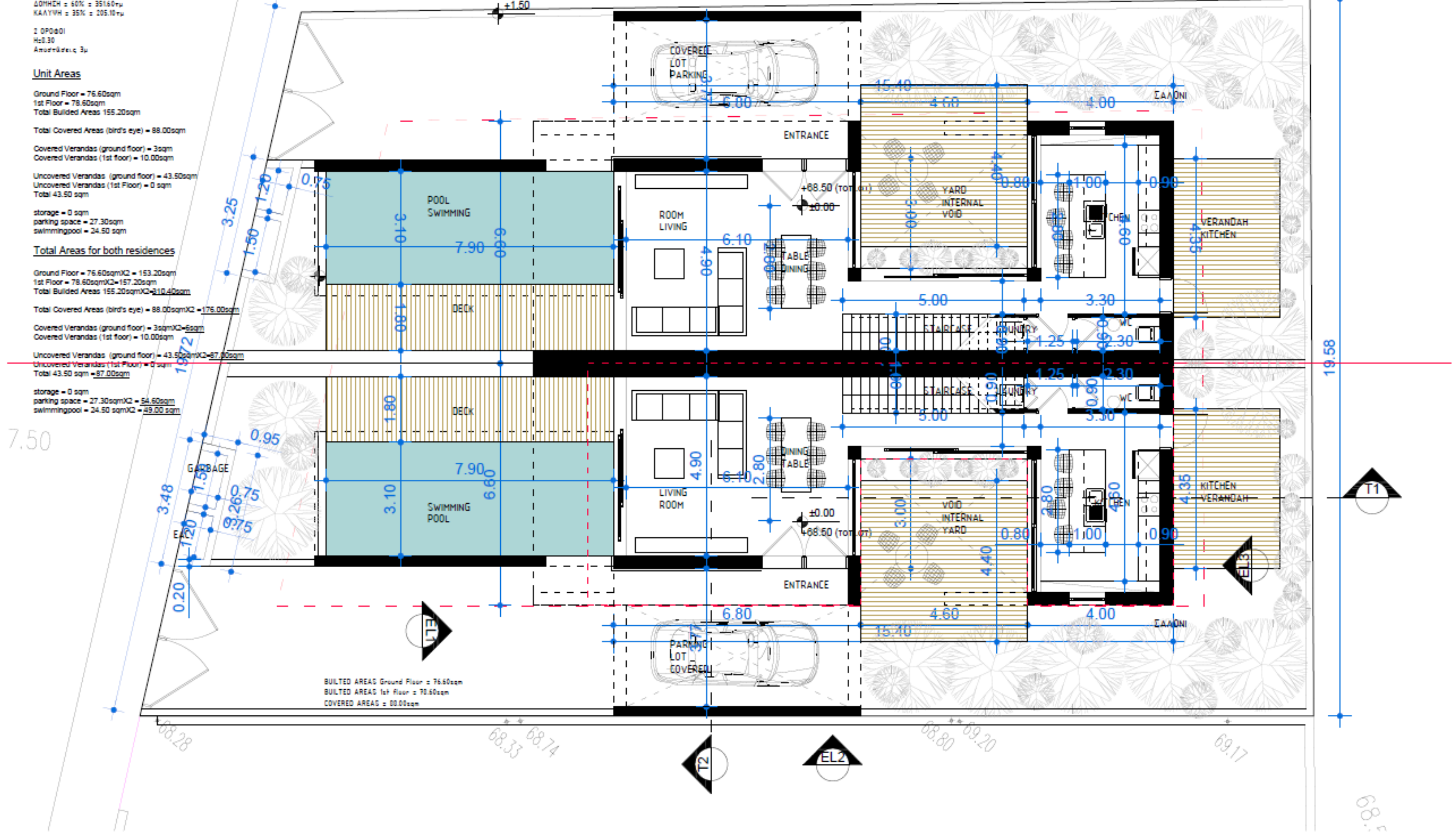
Ground Floor = 76.60sqmX2 = 153.20sqm
 1st Floor = 78.60sqmX2=157.20sqm
 Total Built Areas 155.20sqmX2=310.40sqm

Total Covered Areas (bird's eye) = 88.00sqmX2 = 176.00sqm

Covered Verandas (ground floor) = 3sqmX2=6sqm
 Covered Verandas (1st floor) = 10.00sqm

Uncovered Verandas (ground floor) = 43.50sqmX2=87.00sqm
 Uncovered Verandas (1st floor) = 0 sqm
 Total 43.50 sqm = 87.00sqm

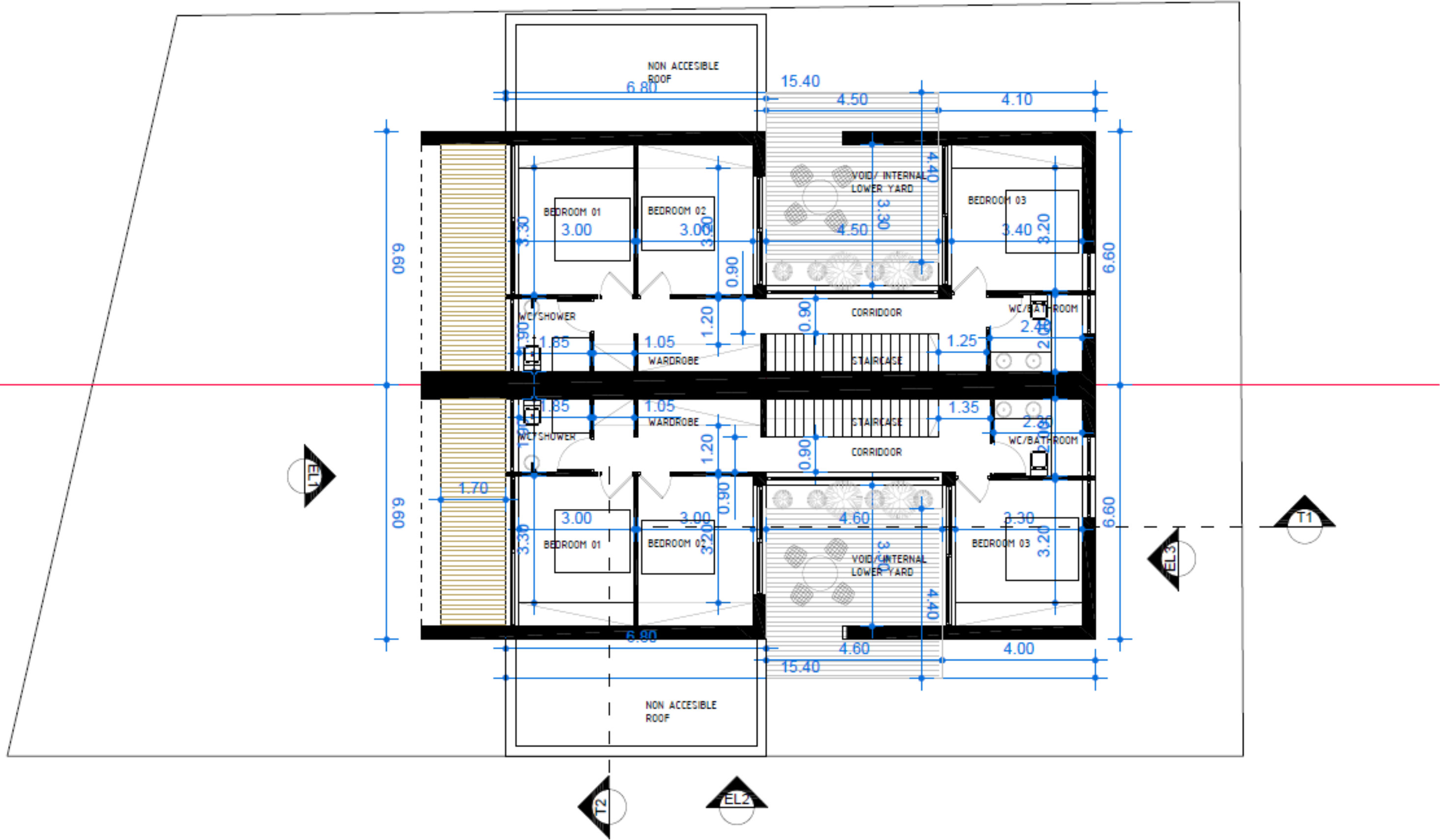
storage = 0 sqm
 parking space = 27.30sqmX2 = 54.60sqm
 swimmingpool = 24.50 sqmX2 = 49.00 sqm

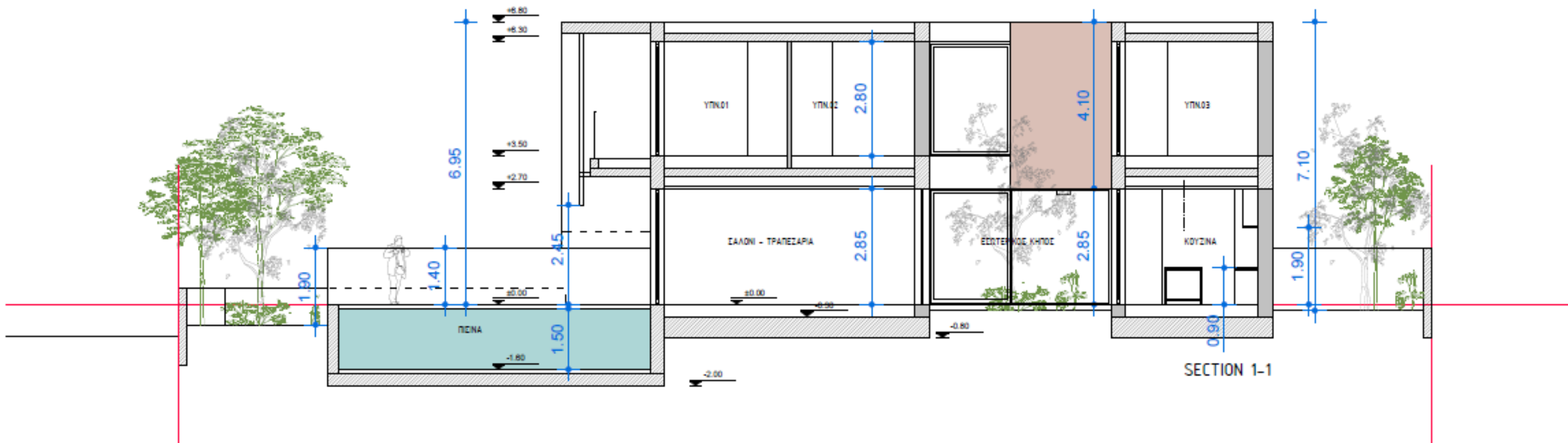
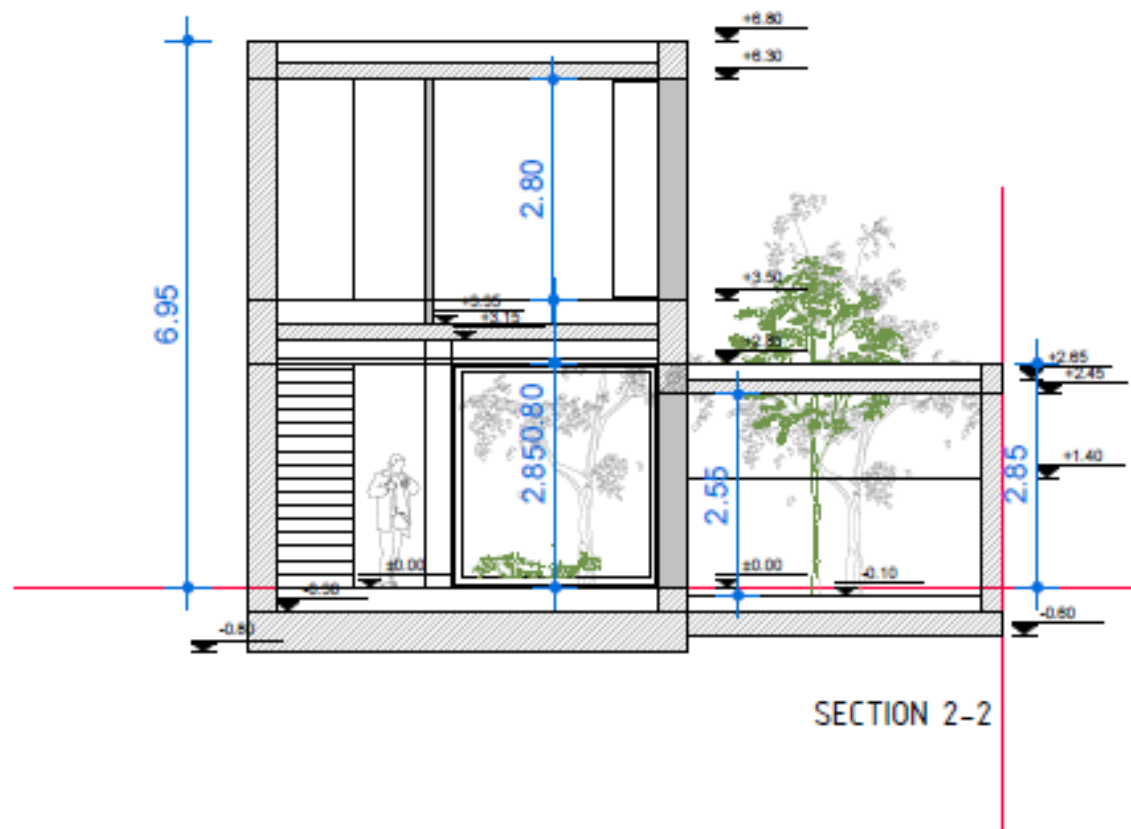


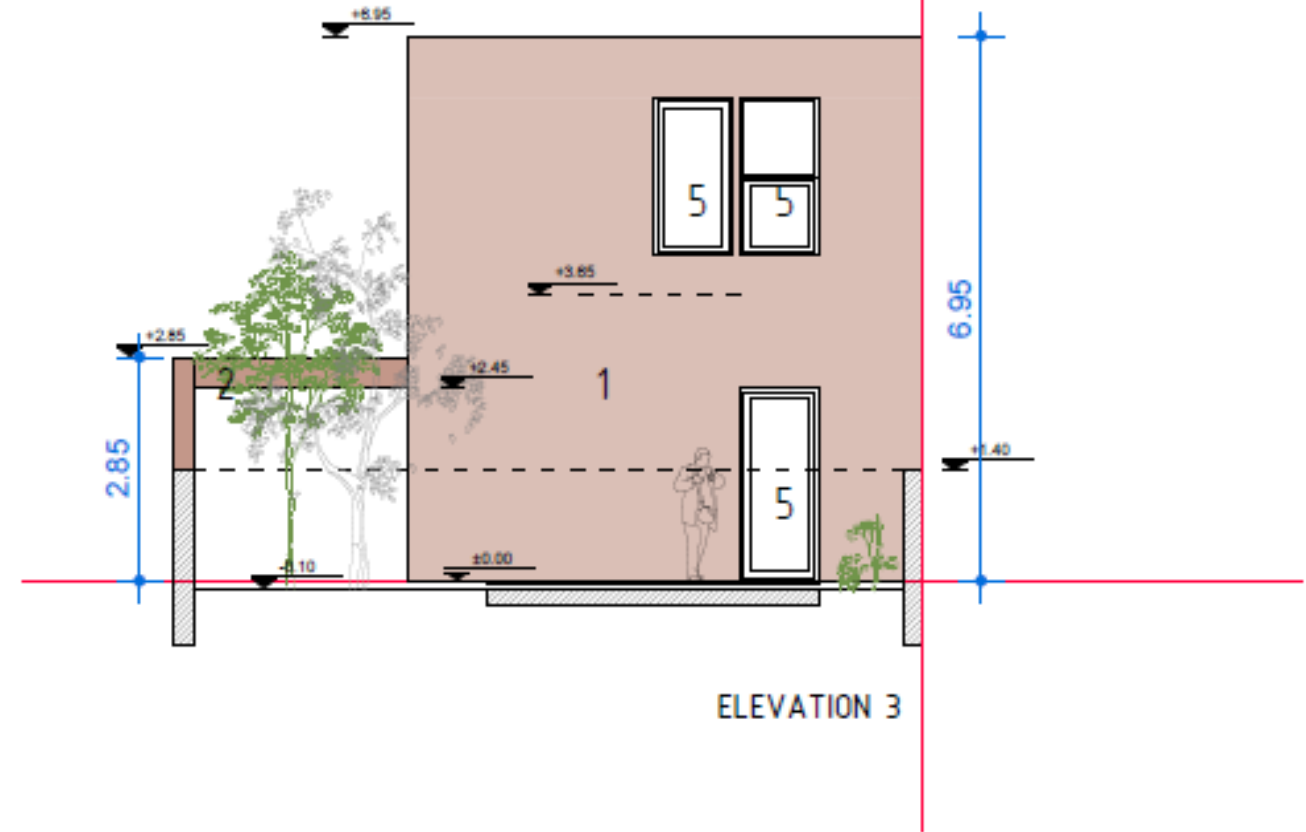
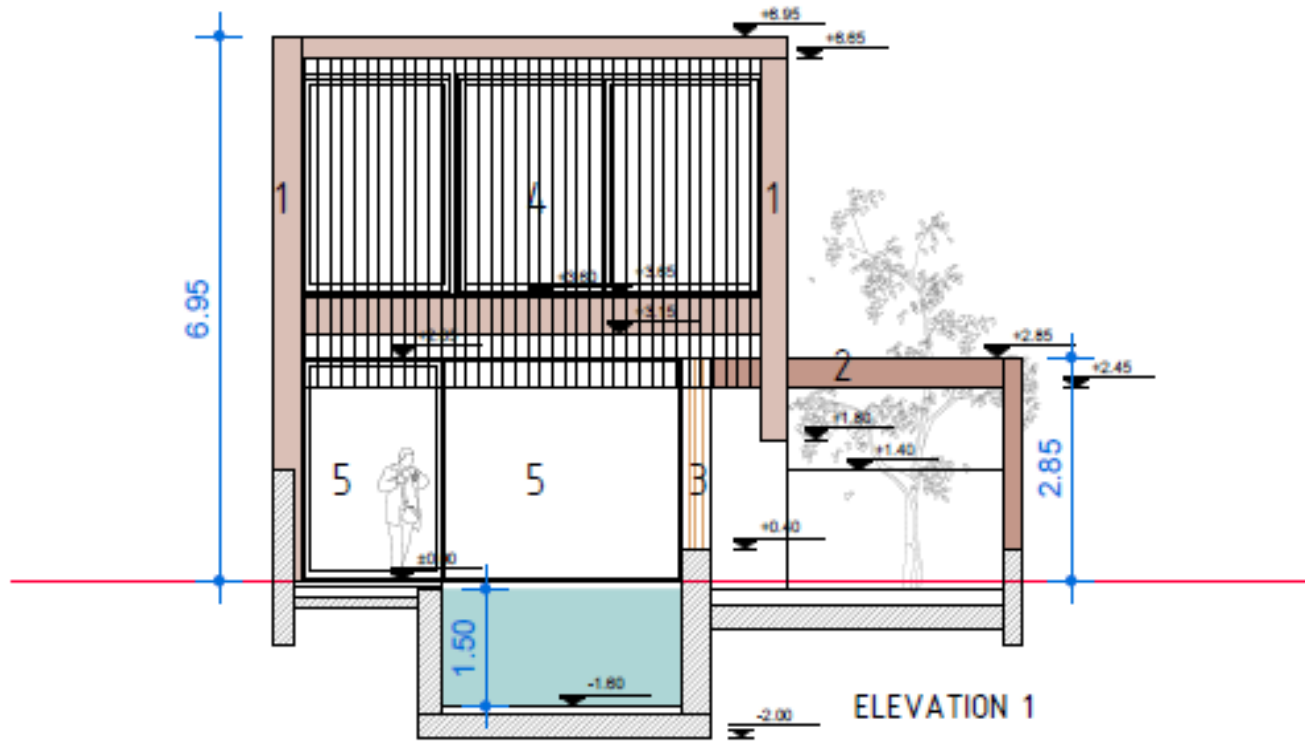
BUILT AREAS Ground Floor = 76.60sqm
 BUILT AREAS 1st floor = 78.60sqm
 COVERED AREAS = 88.00sqm

7.50

68.3

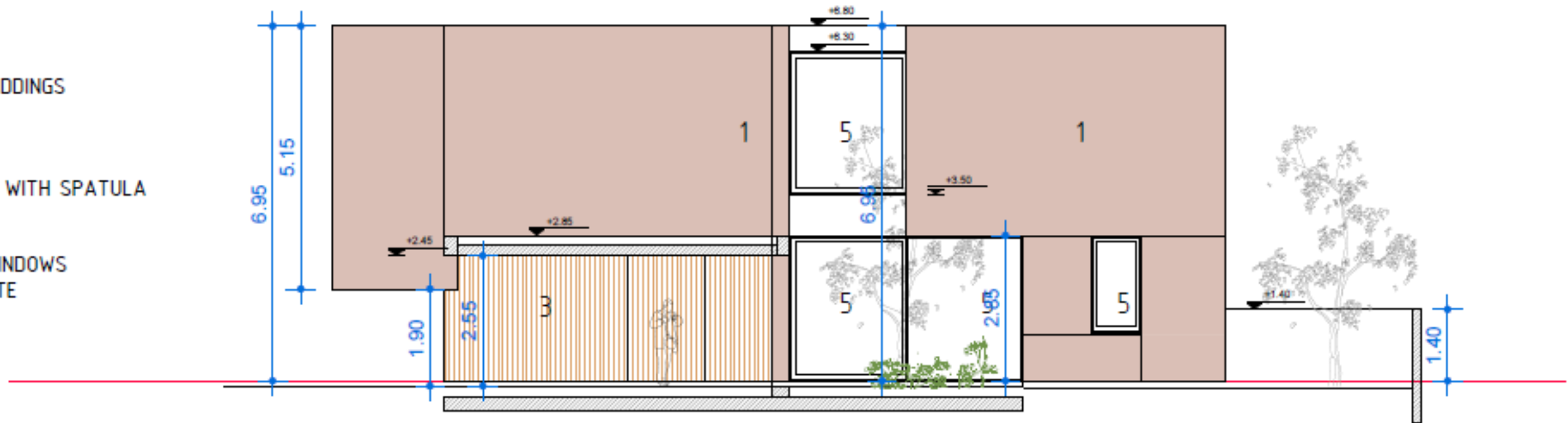






FINISHING MATERIALS/CLADDINGS

1. SPATULA
2. FAREFACE CONCRETE WITH SPATULA
3. WOODEN CLADDING
4. SHADINGS
5. ALUMINIUM DOORS/WINDOWS
6. FARE FACED CONCRETE



ELEVATION 2